

# TKS TYPE



## 주요용도 (Application)

제철, 제강설비, 산업용플랜트, 냉연, 압연설비 등 중하중용 기계에 적용됩니다.

Application for iron and steel mill facility industrial plant facility, cold stripping and rolling facilities and so forth.

## 특징 (Features)

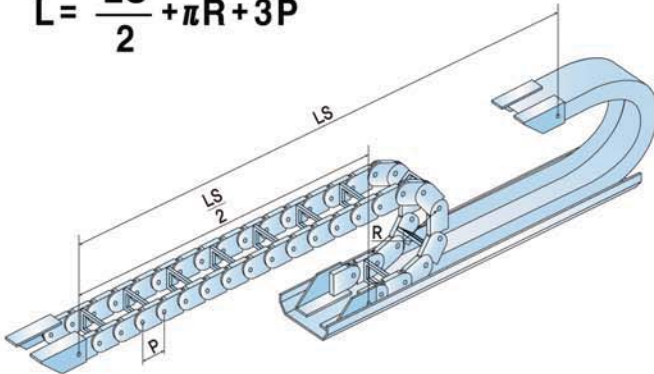
TKS Type 은 Steel Chain 과 알루미늄바로 구성되어 안쪽부분의 알루미늄바를 간단하게 조작하여 Cable, Hose 를 쉽게 탈부착이 가능하도록 되었고,

Divider 를 좌우로 이동할 수 있어 Cable, Hose를 추가로 넣을수 있습니다.

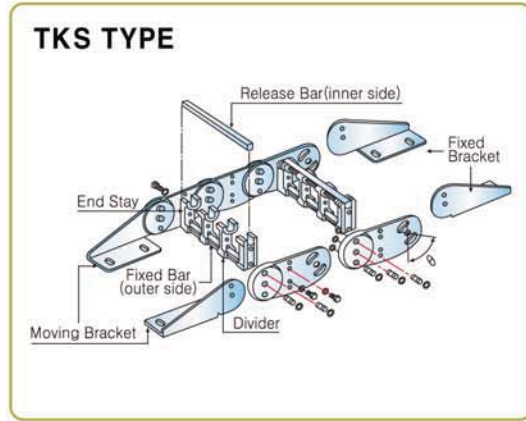
- Long life and durability are ensured from steel chain and aluminum supporter.
- Customized holes of supporter provide better supporter for cable and hose.
- The supporter is made of aluminum to ensure long stroke and durability in harsh environment.
- Quick and easy manipulation for assembling and dissembling cable and hose.
- TKS Type : Application for middle and light weight use.

● 체인 길이 계산법

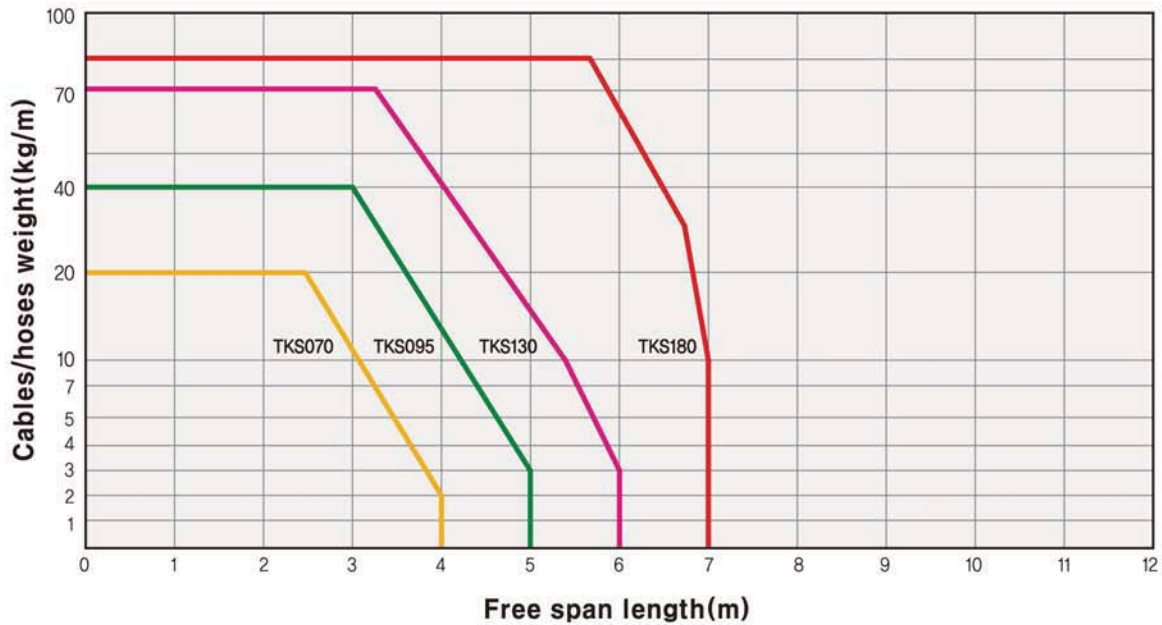
$$L = \frac{LS}{2} + \pi R + 3P$$



● TKS Type 구조

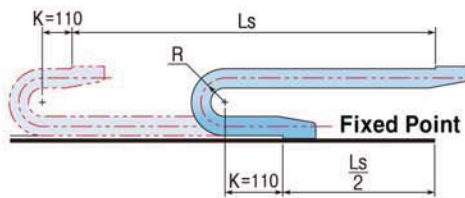
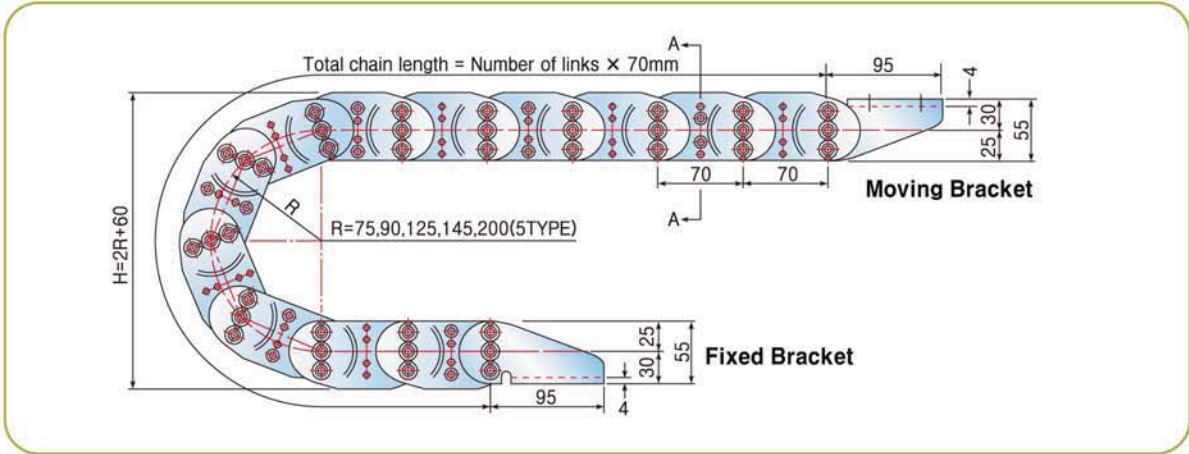


● TKS, H Type 능력선도



# TKS 070 TYPE

## ● Cablechain / Chain Pitch(P)=70mm

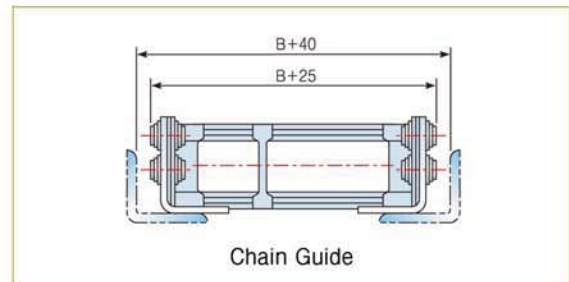
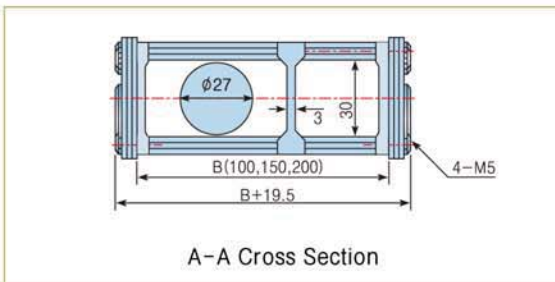


· Chain Length  $L = \frac{L_s}{2} + \pi R + 2K$

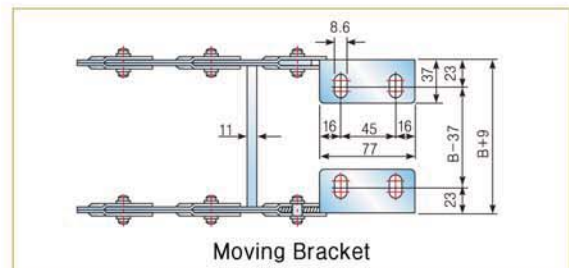
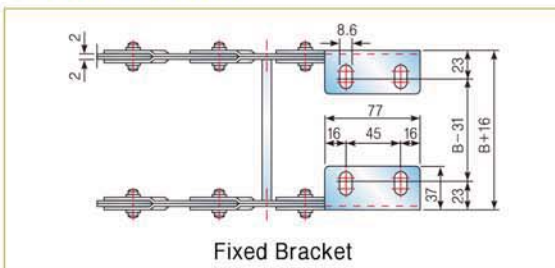
· 곡률반경에 따른 H값

R	75	90	125	145	200
H	210	240	310	350	460

## ● A-A Cross Section / Chain Guide



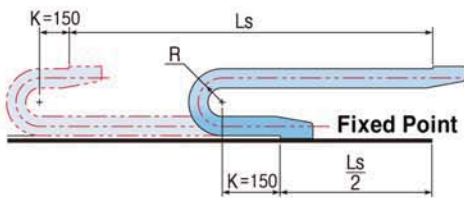
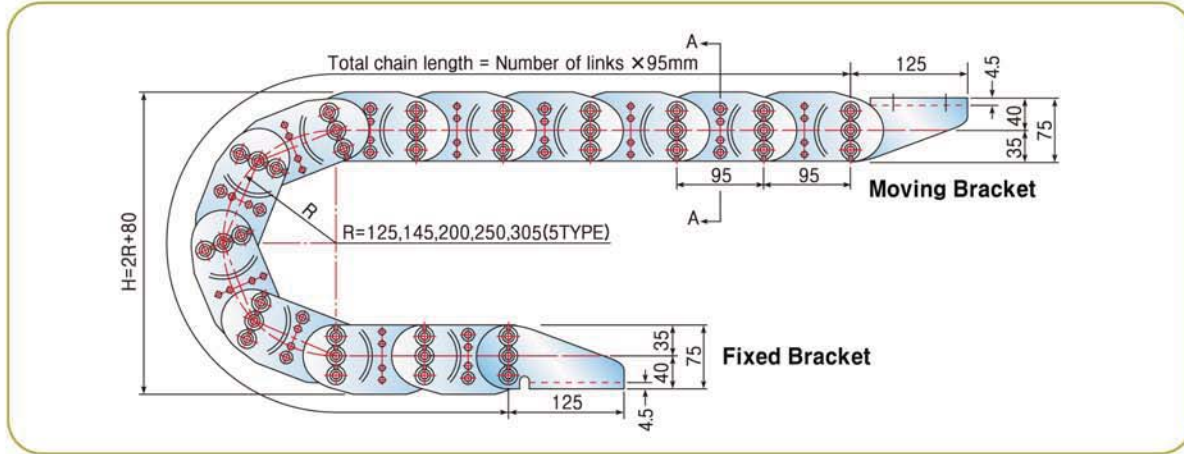
## ● End Bracket



## ● Order Example [주문예]

TKS 070 / Type → R145 / Radius → B200 / Width → 3500L / Length → 3Sets / Q'ty

● **Cablechain / Chain Pitch(P)=95mm**

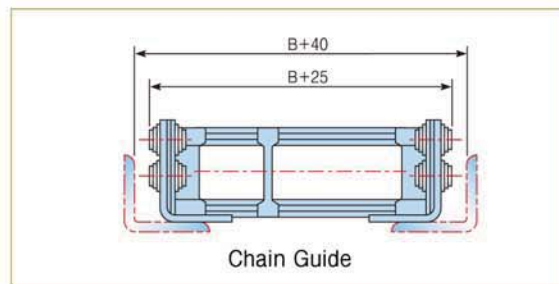
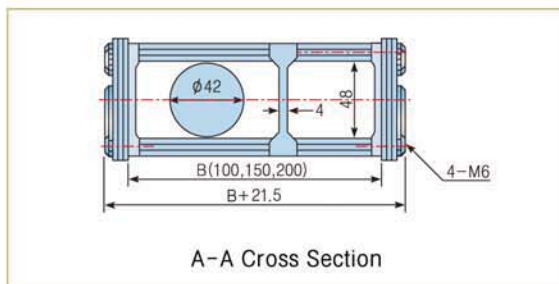


· Chain Length  $L = \frac{Ls}{2} + \pi R + 2K$

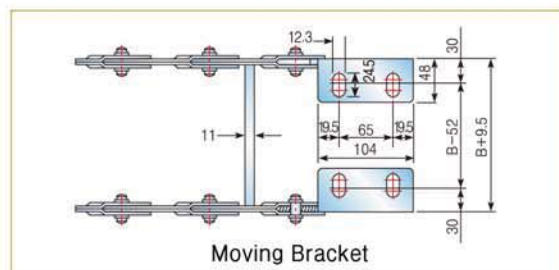
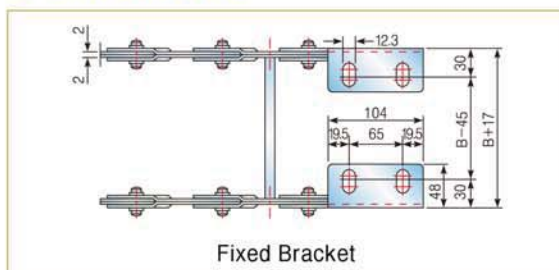
· 곡률반경에 따른 H값

R	125	145	200	250	305
H	330	370	480	580	690

● **A-A Cross Section / Chain Guide**



● **End Bracket**

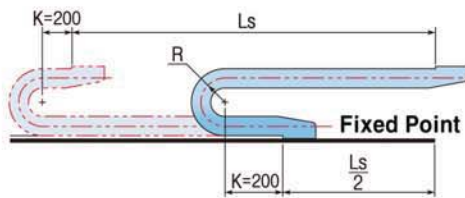
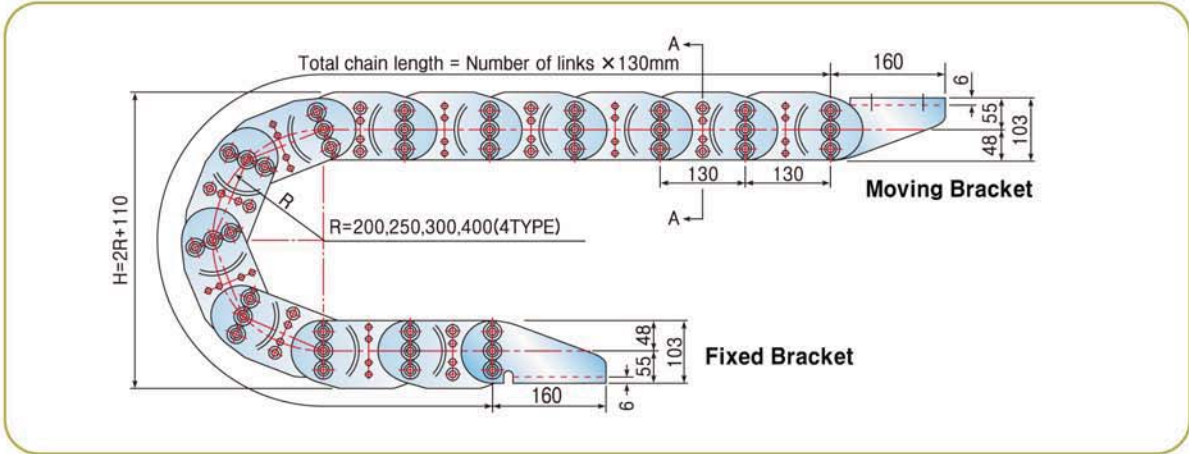


● **Order Example [주문예]**

TKS 095 / Type → R200 / Radius → B400 / Width → 4560L / Length → 3Sets / Q'ty

# TKS 130 TYPE

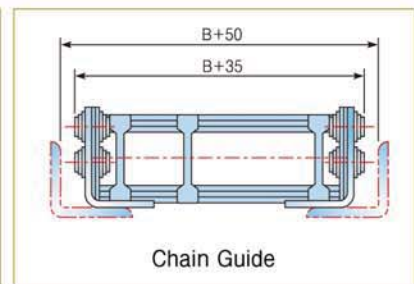
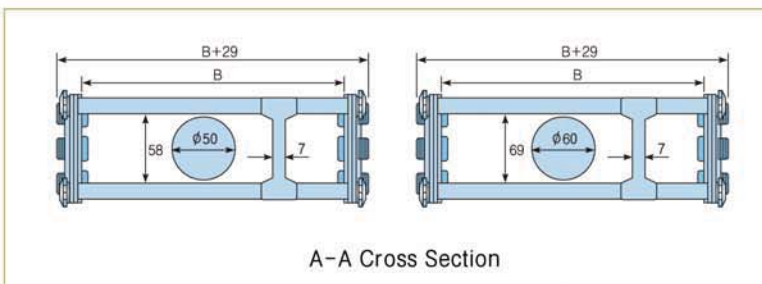
## ● Cablechain / Chain Pitch(P)=130mm



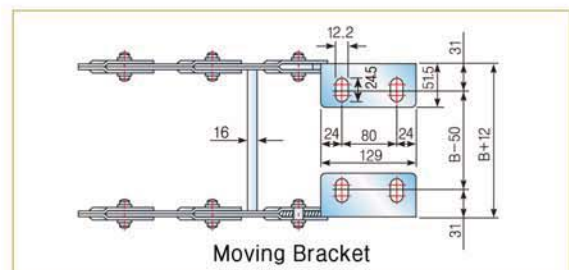
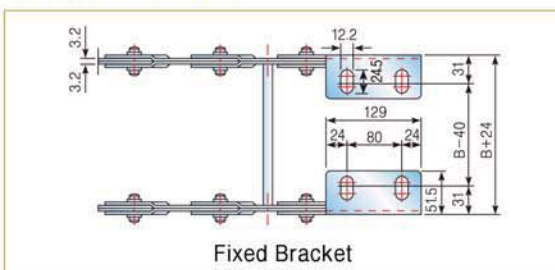
- Chain Length  $L = \frac{Ls}{2} + \pi R + 2K$
- 곡률반경에 따른 H값

R	200	250	300	400
H	510	610	710	910

## ● A-A Cross Section / Chain Guide



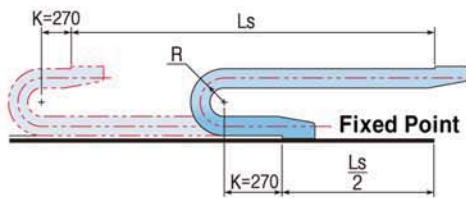
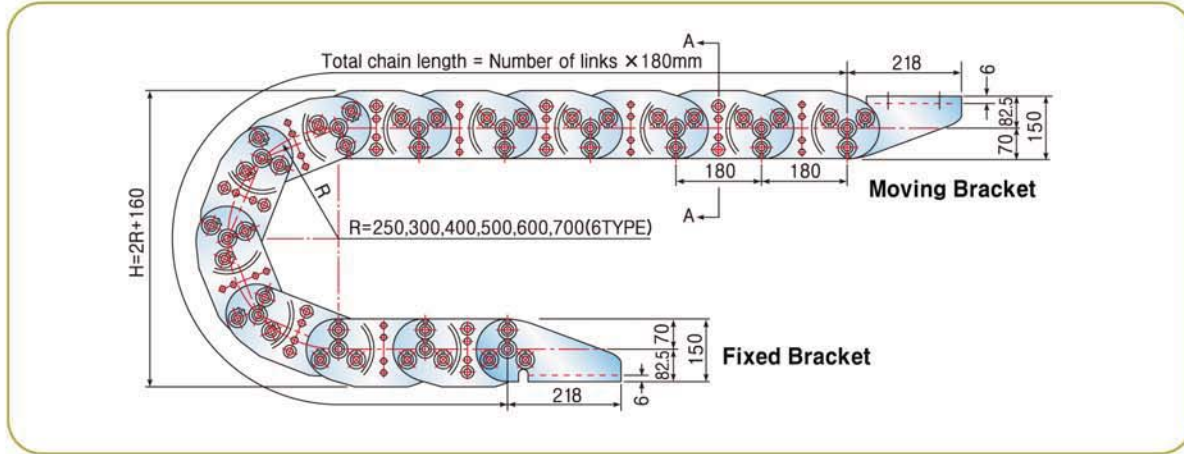
## ● End Bracket



## ● Order Example [주문예]

TKS 130 / Type → R300 / Radius → B400 / Width → 5850L / Length → 5Sets / Q'ty

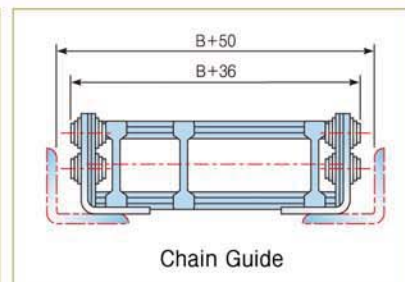
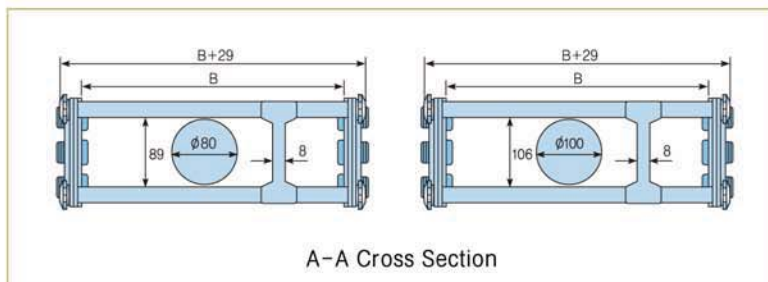
● **Cablechain / Chain Pitch(P)=180mm**



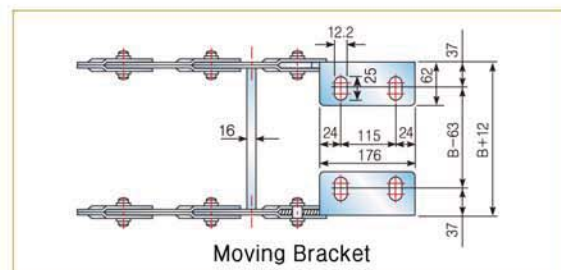
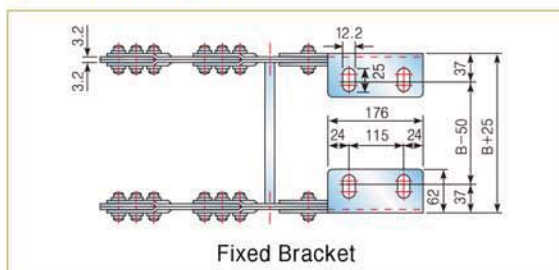
- Chain Length  $L = \frac{Ls}{2} + \pi R + 2K$
- 곡률반경에 따른 H값

R	250	300	400	500	600	700
H	660	760	960	1160	1360	1560

● **A-A Cross Section / Chain Guide**



● **End Bracket**



● **Order Example [주문예]**

TKS 180 / Type → R400 / Radius → B500 / Width → 7560L / Length → 5Sets / Q'ty